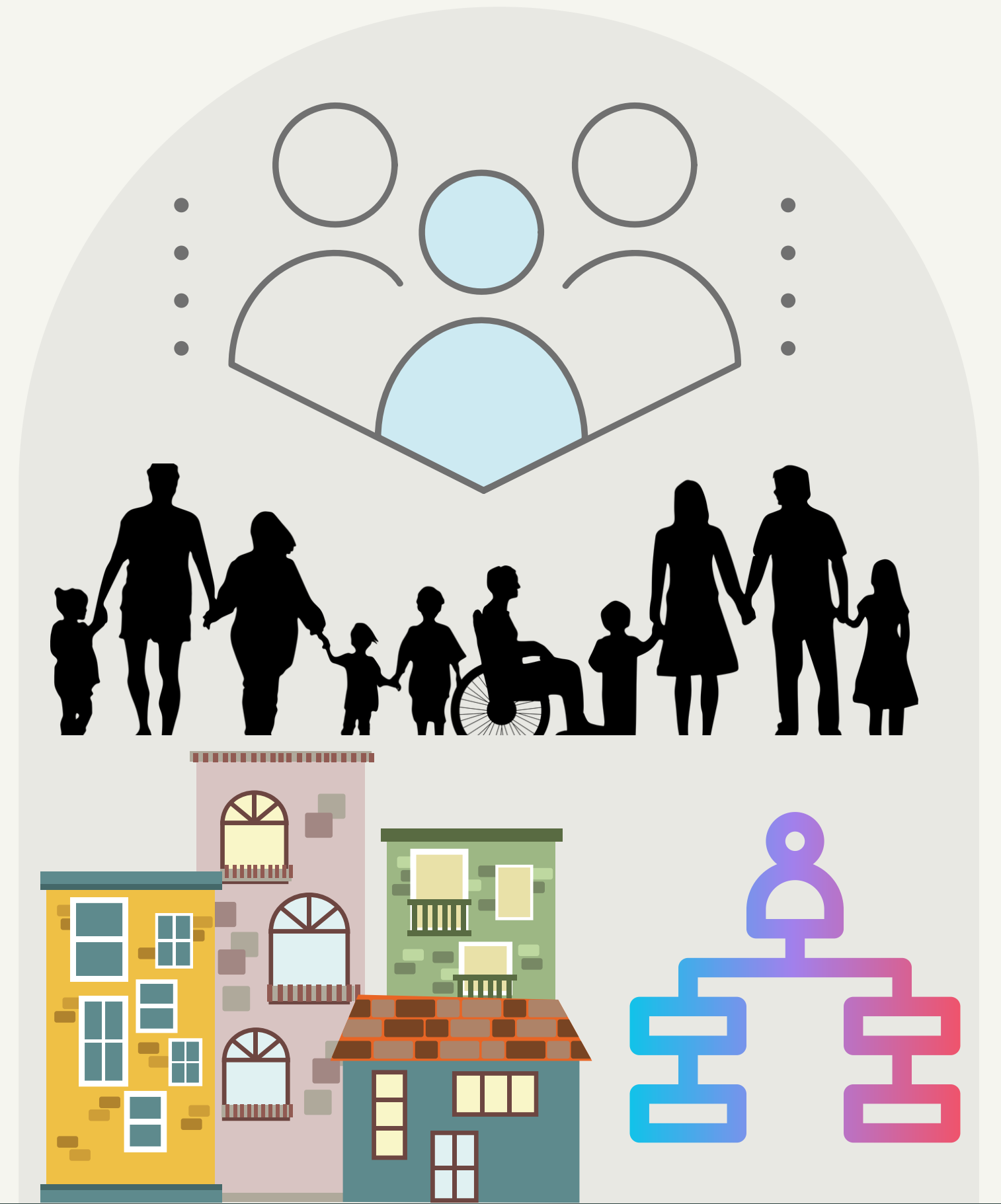


Access and Policy Team: Summer Projects

Supervisor: Dr. Jay Shaw

Presenter: Sarah Qureshi, B.Sc



Overview

Project #1: Community Collaboration During COVID-19: A Narrative Review

Project #2: Environmental Scan on Equity, Diversity and Inclusion in Healthcare Quality, Safety and Innovation

Community Collaboration During COVID-19: A Narrative Review

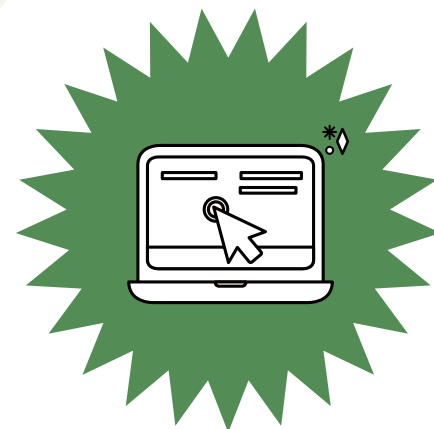
Background:

- Health and social service organizations have participated in several collaboration tables across the local health system
- The relationships built across the health system represent an infrastructure that extends beyond the hospital community and across broader regions of the health system as a whole

Research Question:

"What lessons can be learned and opportunities imagined with respect to the collaboration infrastructure developed during the COVID-19 pandemic?"

Methods:



Narrative Review

Two databases are currently being searched using key words related to 'collaboration', 'care', 'innovation', and 'COVID-19' to screen and conduct a full text review of the academic literature



Document Review

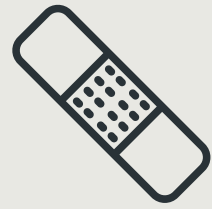
Collaboration tables that WCH was involved in are currently being acquired to identify local collaborations and describe their importance for health and health care



Analysis & Synthesis

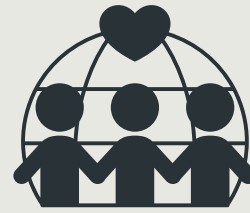
Academic literature and collaboration tables are being analyzed and will be synthesized to outline important directions for research, policy and practice related to the sustainability of such innovations

Preliminary Insights



Culturally Tailored Care is Crucial

- Increases patient engagement
- Increases vaccine uptake rates



Community-Based Organizations Continue to be Key Players in the Pandemic

- Community-based organizations act as hubs, repurpose activities, organize volunteers, and provide health promotion oriented activities



Community-Based Organizations Lack Funding to Sustain Their Efforts

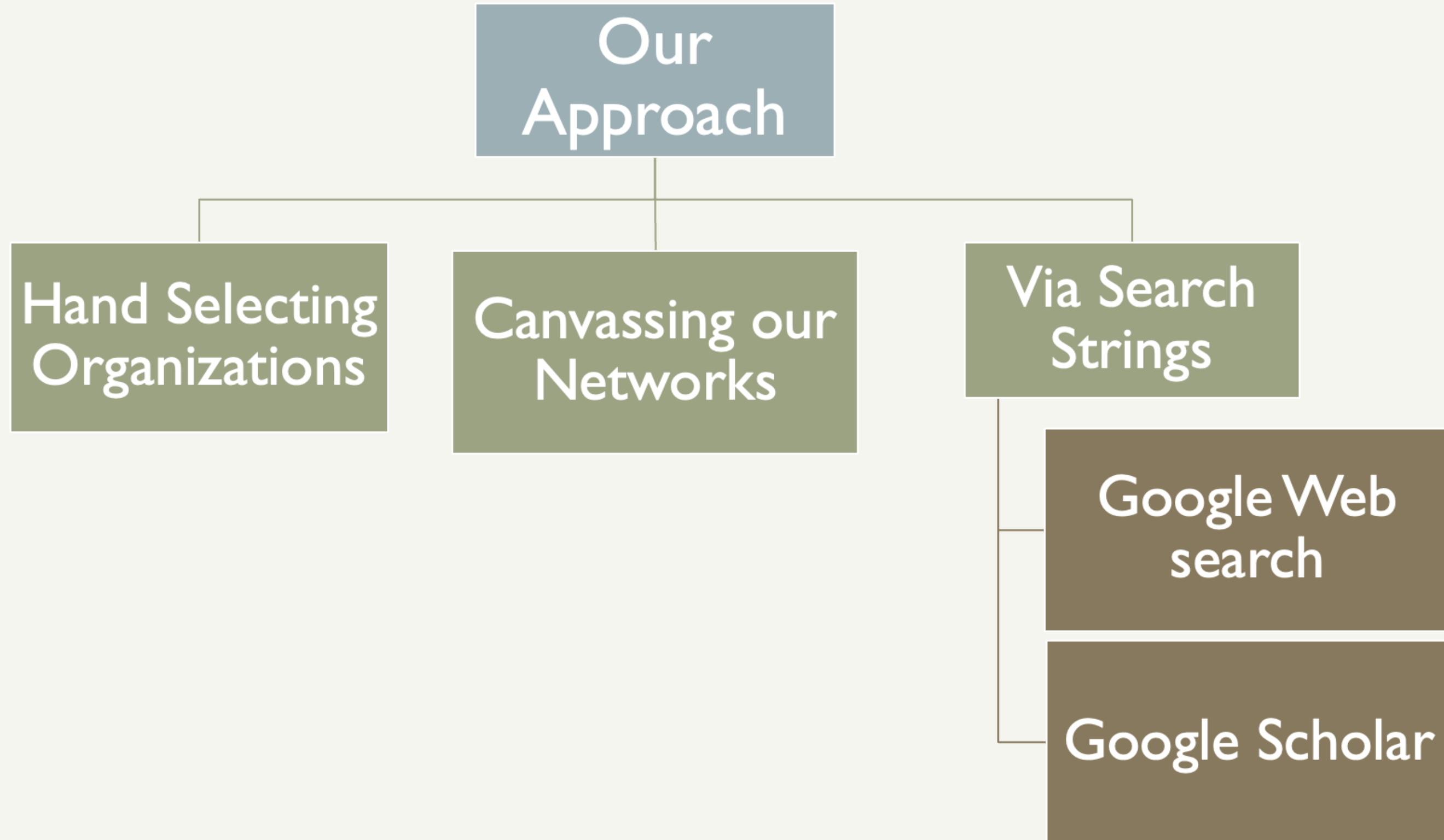
- Community is often seen as a “sideshow” which receives little funding and credibility to solve a policy crisis

Environmental Scan on EDI in Healthcare Quality, Safety and Innovation

Objective:

- The aim of this rapid environmental scan is to address existing knowledge gaps and provide foundational knowledge for a national health organization regarding what "equity", "diversity" and "inclusion" might mean for their work

Methods:



Preliminary Insights

Most organizations...

- Often group the terms 'diversity' and 'inclusion' with equity
- Primarily focus on equity and not diversity and inclusion
- Do or encourage work that supports diversity and inclusion efforts, but do not explicitly list their definitions of equity, diversity and inclusion on their website/other related documents



Acknowledgments

Thank you!

Dr. Jay Shaw

Shivani Chandra

Simone Shahid

Dara Gordon

Support was provided by Emily Stowe
Society funding at Women's College
Hospital Foundation.

Let's Connect!

sarah.qureshi@wchospital.ca